

TOWNSHIP OF

WEBBER

T18N R13W

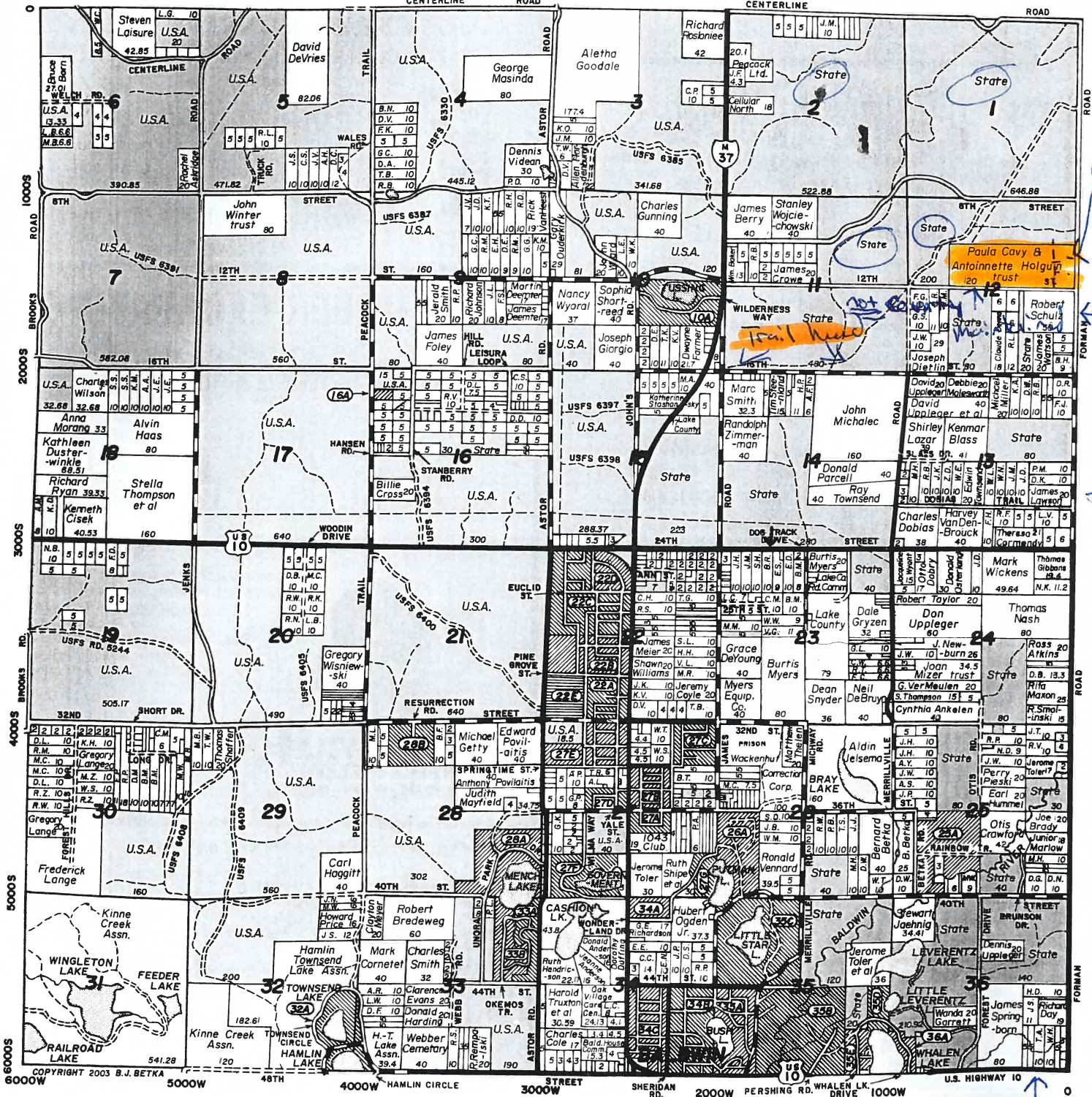
RECORDED PLATS:

- 10A WILDERNESS LAKE
- 16A FOREST ACRES
- 22A LAKEWOODS ACRES NO. 2
- 22B LAKEWOODS ACRES NO. 3
- 22C LAKEWOODS ACRES NO. 4
- 22D LAKEWOODS ACRES NO. 8
- 22E LAKEWOODS ACRES NO. 9
- 25A LEISURA
- 26A WEST'S LAND ACRES
- 27A LAKEWOODS ACRES
- 27B LAKEWOODS ACRES
- 27C LAKEWOODS ACRES
- 27D LAKEWOODS ACRES
- 27E LAKEWOODS ACRES NO. 2
- 27F GOVERNMENT LAKE
- 27G PUTMAN PARK

- 28A UNORA PARK
- 28B HAVEN'S REST
- 32A HAMLIN-TOWNSEND LAKES
- 33A ARROWHEAD VILLAGE
- 33B ARROWHEAD VILLAGE NO. 2
- 34A LAKEWOODS ACRES NO. 1
- 34B LAKELAND ACRES
- 34C LAKELAND ACRES NO. 3
- 35A LAKELAND ACRES NO. 1
- 35B LAKELAND ACRES NO. 2
- 35C LAZY ACRES
- 35D WHALEN LAKE RESORT NO. 1
- 35E WHITE PINE SHORES
- 36A WHALEN LAKE RESORT

STATE AND FEDERAL LANDS ARE SHOWN IN GREEN.

LAKE COUNTY			
ELK	EDEN	NORTH NEWKIRK	DOVER
SAUBLE	PEACOCK Page 41	SOUTH NEWKIRK	ELLSWORTH
SWEET-WATER Page 33	WEBBER Page 29	CHERRY VALLEY	PINORA
LAKE	PLEASANT PLAINS Page 21	YATES	CHASE



County maintained road
5 acre parcels

COPYRIGHT 2003 B.J. BETKA
6000W 5000W 4000W HAMLIN CIRCLE 3000W STREET SHERIDAN RD. 2000W PERSHING RD. WHALEN LK. DRIVE 1000W U.S. HIGHWAY 10

State

LC: \$500, 8%, 300 mo., 10 yrs.

43-11-012-002-00

State

Par 13 27,900 Easement	Par 14 27,900
Par 11 26,900	Par 12 26,900
Par 9 26,900 Easement	Par 10 26,900
Par 7 26,900	Par 8 26,900
Par 5 26,900 Easement	Par 6 26,900
17,900	17,900
17,900	17,900

Forman Rd

12th

St