

PLAT OF WOLF LAKE SUBDIVISION

---IN---

Township 19 N. R. 13 W. Lake County, Mich.

Scale 200ft to an Inch.

Examined and Approved
JUL 19 1911
Deputy Auditor General.

COPY REGISTERED IN OFFICE OF REGISTERED PLAT OF DEEDS JUL 20 1911

I hereby certify that this copy is a true copy of the MAP or PLAT forwarded the Register of Deeds for recording.
Compared **JUL 20 1911**
Mark Housey
Deputy Auditor General.

Filed in Auditor General's Dep't. **JUL 26 1911**
Geo. C. Housey
Deputy Auditor General.

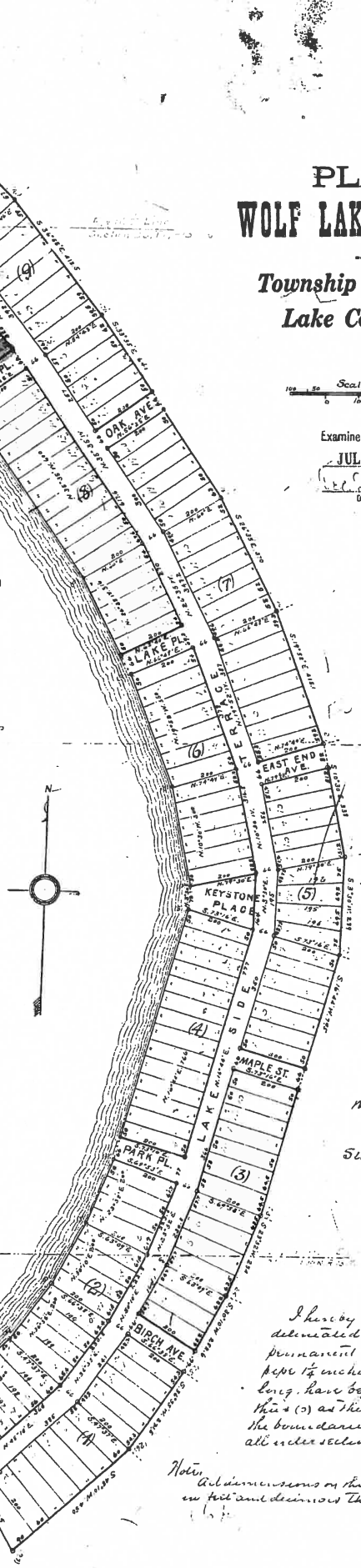
Know All Men by These Presents, That Mr. Frank W. Warremaker and Elizabeth Warremaker his wife, and Everett H. Hunkley and Mary E. Hunkley, his wife, as grantors, have caused the land embraced in the annexed plat to be surveyed, laid out and platted, to be known as Wolf Lake Subdivision in Township 19 N. R. 13 W., Lake County, Mich., and that the streets and alleys as shown on said plat are hereby dedicated to the use of the public, except Keystone Place.

Witness my hand and seal this 15th day of June 1911 at the City of East Lansing, Michigan.
Frank Warremaker (Seal)
Elizabeth Warremaker (Seal)
Everett H. Hunkley (Seal)
Mary E. Hunkley (Seal)

State of Michigan }
County of East }
I, R. Edwin Stoughton, County Clerk, do hereby certify that the land embraced in the annexed plat of Wolf Lake Subdivision in Township 19 N. R. 13 W., Lake County, Mich., is described as follows:

N. 89°10' E. 300 ft. to Station (1), then	S. 54°37' E. 303 ft. to Sta (15), then
N. 86°35' E. 210 " "	S. 45°23' E. 522 " "
N. 30°10' E. 200 " "	S. 36°55' E. 413.5 " "
N. 23°32' E. 200 " "	S. 30°35' E. 641 " "
N. 16°41' E. 760 " "	S. 26°35' E. 370 " "
N. 3°20' E. 70 " "	S. 19°32' E. 4151 " "
N. 10°30' N. 300 " "	S. 10°30' E. 338 " "
N. 19°50' N. 350 " "	S. 3°30' N. 259 " "
N. 26°35' N. 316 " "	S. 16°44' N. 795 " "
N. 35°35' N. 600 " "	S. 23°32' N. 254 " "
N. 36°55' N. 366 " "	S. 30°10' N. 252 " "
N. 45°31' N. 650 " "	S. 36°55' N. 271.5 " "
N. 54°51' N. 200 " "	S. 49°10' N. 150 " "
N. 27°36' E. 466 " "	N. 30°00' N. 472.5 " "

Place of Beginning.



Meander to Corner:
Meander Cor. between Sects 34 & 35
Double White Birch 6°18'40" E. 48 1/2 ft.
N.W. Cor. Lot (17) Block (5)
N Oak 8°46'47" N. 119 ft.
Do. 5°54'05" W. 9 "

N.W. Cor. Block (4)
N. Maple 9° N. 55' E. 33 ft.
N. angle in Lot (4) Block (11)
N Oak 4° 52' 15" E. 57 ft.
Do. 6° 5' 1" W. 12.9 "

Sta (15)
N Oak 7° 54' 40" W. 33.1 "
Do. 10° 3' 15" E. 28.1 "

This plat is hereby approved by the undersigned who hereby certify that they constitute the town board of _____ Township in said County, Michigan.
R. H. Hunkley, Mayor
Mary E. Hunkley, Clerk
George T. Hunkley, D.P.

Office of County Treasurer
Berkshire Michigan Lake County
June 27 1911.
I hereby certify that there are no tax liens or titles held by the state on the lands described herein and that there are no tax liens or titles held by individuals on a lien basis for the year of 1911 preceding this date and that the taxes for said lands for the year are paid as shown by the records of this office.
Raymond C. Gault, County Treasurer

I hereby certify that the plat herein delineated is a correct one, and that permanent monuments consisting of iron pipe 1 1/2 inches in diameter by 20 inches long, have been planted at points marked this (2) as shown shown at all angles in the boundaries of the land platted, and at all other sections of streets or streets and alleys.

Note: All dimensions on this plan are in feet and decimals thereof.
F. C. Green, Surveyor.