

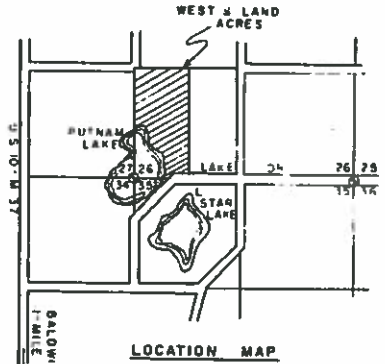
"WEST'S-LAND ACRES"

PART OF THE W. 1/2 OF THE S.W. 1/4
SEC. 26, T18N-R13W, WEBBER TWP.,
LAKE COUNTY, MICHIGAN

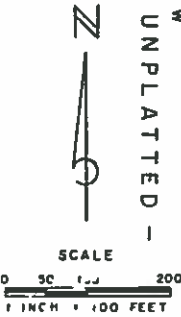
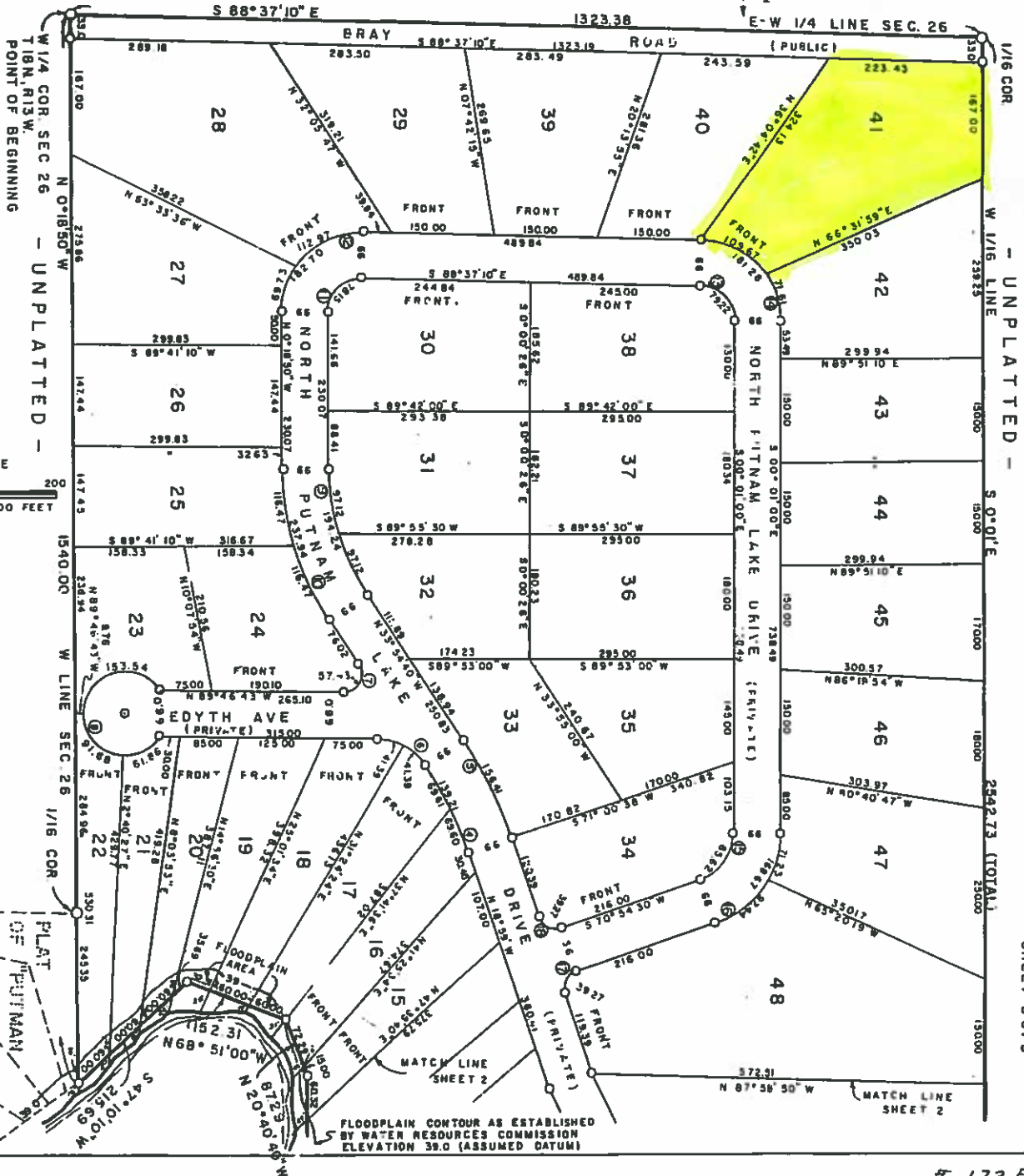
CURVE DATA				
CURVE	ANGLE	RADIUS	LC	CHD BRG.
4	14°55'40"	534.31	138.82	N28°26'50"W
5	14°55'40"	600.31	155.98	N28°26'50"W
6	65°02'08"	85.09	79.50	N67°50'34"W
7	12°07'36"	26.31	46.64	N28°09'18"E
8	23°14'34"	80.00	68.00	N7°13'17"E
9	33°35'50"	331.25	191.46	N7°06'45"W
10	33°35'50"	397.25	229.62	N7°06'45"W
11	9°41'40"	114.46	59.09	N45°32'00"E
12	9°41'40"	114.46	163.79	N45°32'00"E
13	88°36'10"	51.23	71.56	S64°19'05"E
14	88°36'10"	117.23	153.76	S49°19'05"E
15	7°02'00"	70.05	81.38	S35°30'00"W
16	7°02'00"	136.05	158.08	S35°30'00"W
17	90°	25.00	35.36	N26°01'00"E
18	90°	25.00	35.36	N63°59'00"W

LEGEND

ALL DIMENSIONS ARE IN FEET
PLAT BEARINGS WERE DETERMINED FROM BEARING
ON THE EAST LINE OF THE RECORDED PLAT OF
"PUTMAN PARK"
CONCRETE MONUMENTS 4" DIA ARE AT ALL POINTS
MARKED THUS (O)
ALL LOT CORNERS ARE IRON PIPES 3/4" IN DIA
18" IN LENGTH (6 LB PER LINEAL FOOT)
ALL CURVE DIMENSIONS ARE ARC LENGTHS



- UNPLATTED -



W 1/4 COR. SEC 26
T18N, R13W.
POINT OF BEGINNING

- UNPLATTED -

- UNPLATTED -

SHEET 30F3

FLOODPLAIN CONTOUR AS ESTABLISHED
BY WATER RESOURCES COMMISSION
ELEVATION 39.0 (ASSUMED DATUM)