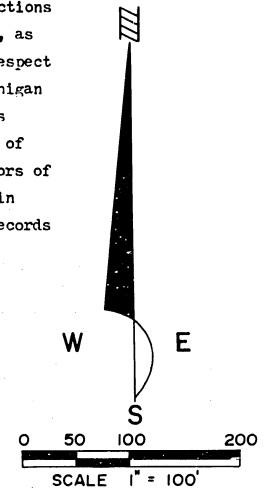


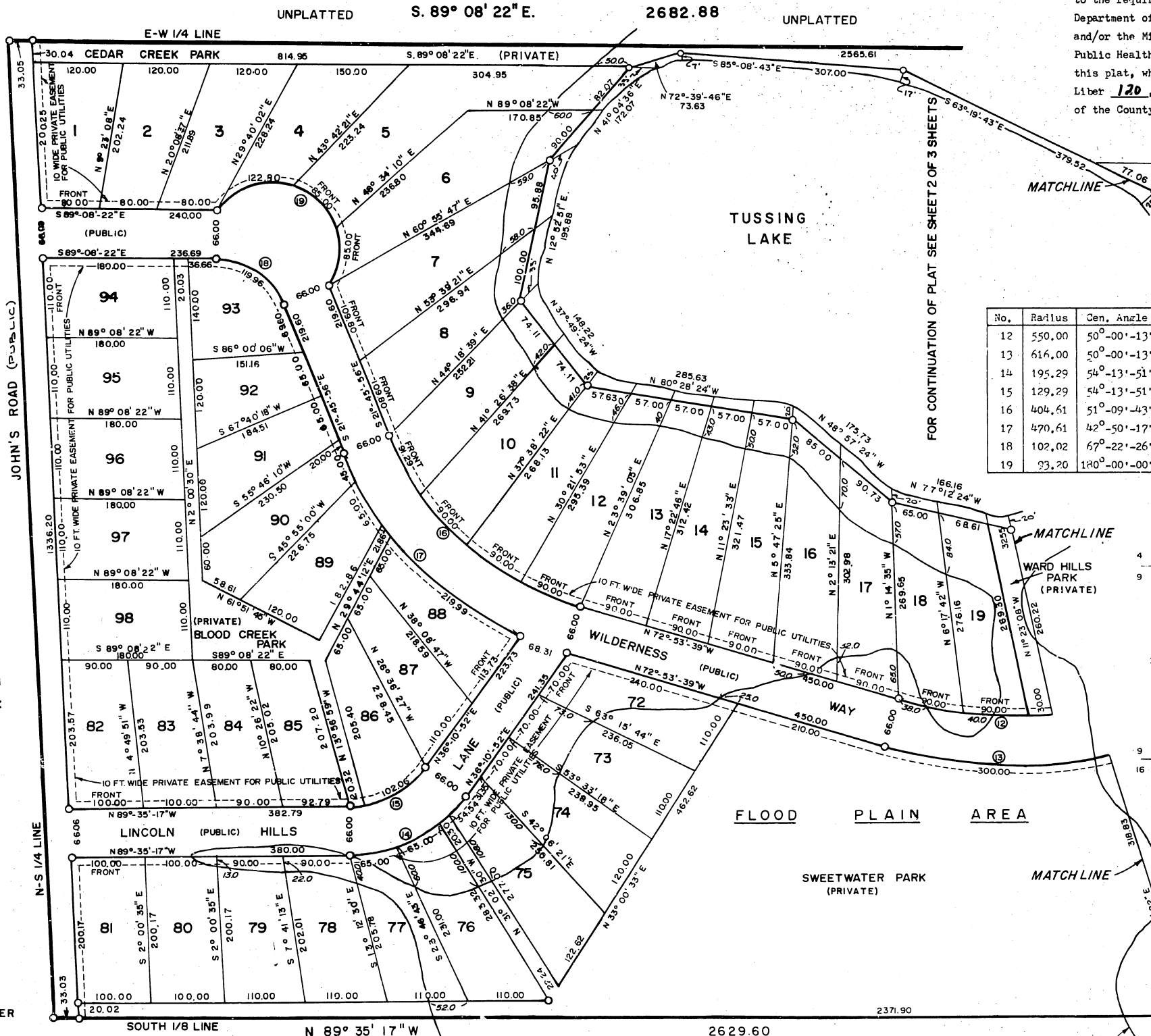
"WILDERNESS LAKE"

N 1/2 OF THE SE 1/4 OF SECTION 10, T. 18 N., R. 13 W., WEBBER TOWNSHIP, LAKE COUNTY, MICHIGAN

This plat is subject to restrictions as required by Act 288 of 1967, as amended on certain lots with respect to the requirements of the Michigan Department of Natural Resources and/or the Michigan Department of Public Health and the Proprietors of this plat, which are recorded in Liber 120, Page 282-5 of records of the County of Lake.



CENTER 1/4 CORNER



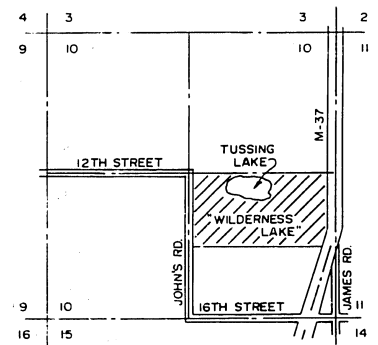
FOR CONTINUATION OF PLAT SEE SHEET 2 OF 3 SHEETS

MATCHLINE

MATCHLINE

MATCHLINE

| CURVE DATA | | | | | | |
|------------|--------|--------------|--------|--------|--------|-----------------|
| No. | Radius | Gen. Angle | Arc | Tan. | L.C. | L.C. Bearing |
| 12 | 550.00 | 50°-00'-13" | 480.00 | 256.49 | 464.91 | S 82°-04'-12" W |
| 13 | 616.00 | 50°-00'-13" | 537.60 | 287.27 | 520.70 | S 82°-04'-12" W |
| 14 | 195.29 | 54°-13'-51" | 184.84 | 100.00 | 178.02 | N 63°-17'-52" E |
| 15 | 129.29 | 54°-13'-51" | 122.38 | 66.21 | 117.86 | N 63°-17'-52" E |
| 16 | 404.61 | 51°-09'-43" | 361.29 | 193.69 | 349.41 | N 47°-20'-47" W |
| 17 | 470.61 | 42°-50'-17" | 351.86 | 184.61 | 343.72 | N 43°-11'-08" W |
| 18 | 102.02 | 67°-22'-26" | 119.95 | 68.01 | 113.17 | S 55°-27'-05" E |
| 19 | 93.20 | 180°-00'-00" | 292.80 | ----- | 186.40 | S 55°-27'-08" E |



LOCATION SKETCH
SCALE
1" = 2000'

PLAT LEGEND

All dimensions are in feet.
All curvilinear dimensions are shown along the arc.
Concrete monuments have been placed at all points marked "o".
All lot corners are one-half inch iron rods, 18 inches in length and weighing no less than 0.6 lbs. per lineal foot.
Bearing were established by solar observation on June 22, 1972.
ALL WATERFRONT LOTS EXTEND TO THE WATER'S EDGE

NEWAYGO ENGINEERING AND SURVEY CO.
274 N. CHARLES STREET (M-37) WHITE CLOUD, MICHIGAN 49349

FLOOD PLAIN CONTOUR AS ESTABLISHED BY THE WATER RESOURCES COMMISSION, ELEV. 896.0 USGS DATUM.

FLOOD PLAIN CONTOUR AS ESTABLISHED BY THE WATER RESOURCES COMMISSION, ELEV. 896.0 USGS DATUM.

" WILDERNESS LAKE "

N 1/2 OF THE SE 1/4 OF SECTION 10, T. 18 N., R. 13 W., WEBBER TOWNSHIP, LAKE

UNPLATTED

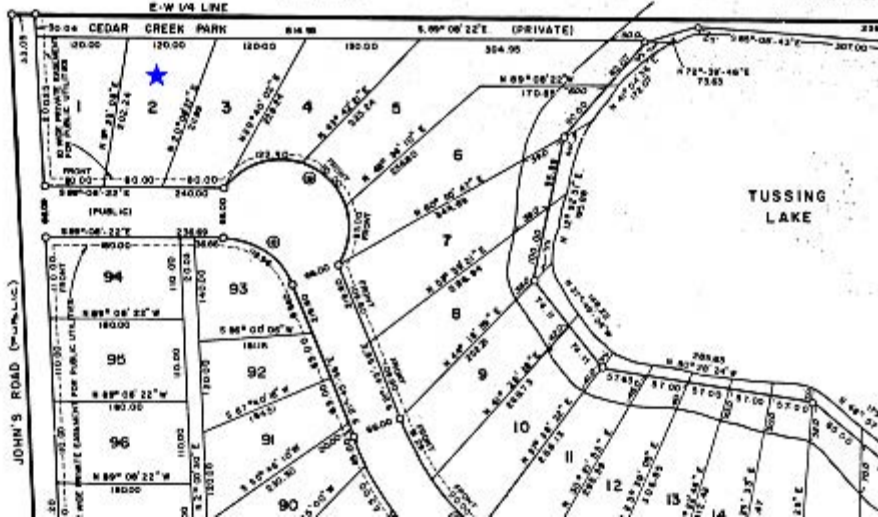
S. 89° 08' 22" E.

2682.88

UNPLATTED

CENTER 1/4
CORNER

E-W 1/4 LINE



1336.46

JOHN'S ROAD (PUBLIC)

TUSSING
LAKE