

D 35'57" W
NORTH 2619.50'

Q 16 MILE ROAD (66' PUBLIC)
(20' ± WIDE GRAVEL)

FOUND 2 1/2" RT4W
W/3 1/4" DIA. BRASS DISK
WITNESSES:
5" X 5" CONC. MON. W/3" DIA. BRASS
554E 44.55'
20" R. PINE N29E 50.0'
10" R. PINE S32E 78.20'
12" B. OAK S21W 84.18'
SW. COR. FND. HOUSE 86411 N35W 78'

NORTH SECTION LINE
S 89°38'43" E

1513.75'

RIGHT OF WAY LINE

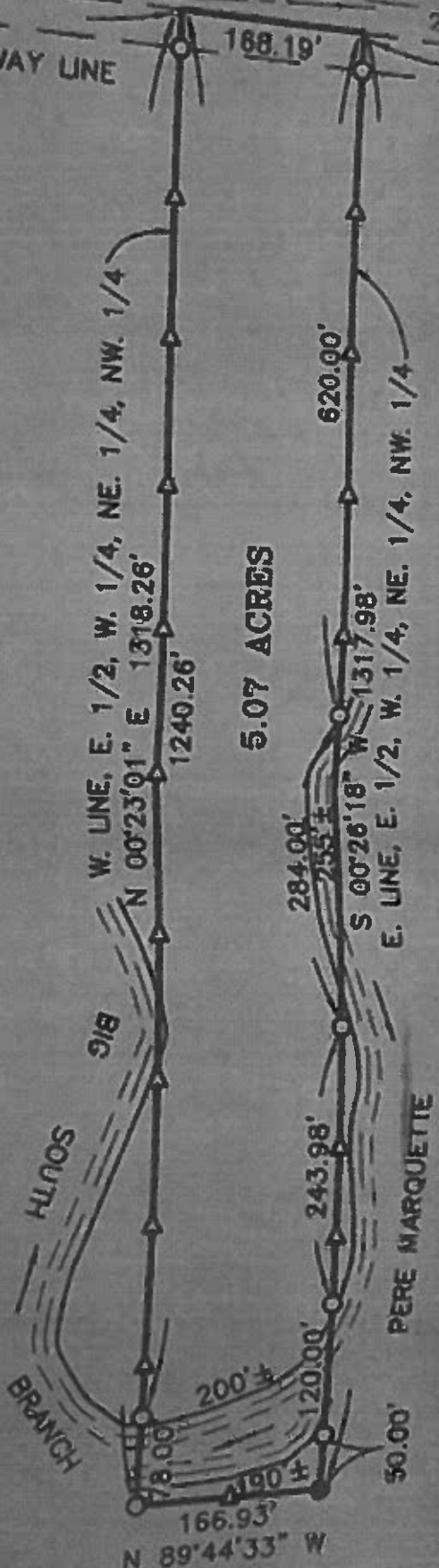
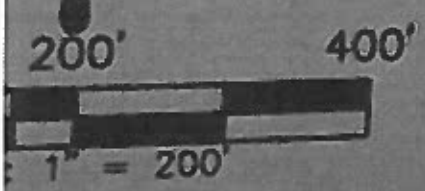
168.19'

2691.11'

1009.17'

N R14W

33'



W. LINE, E. 1/2, W. 1/4, NE. 1/4, NW. 1/4
N 00°23'01" E 1318.26'

5.07 ACRES

620.00'

E. LINE, E. 1/2, W. 1/4, NE. 1/4, NW. 1/4

284.00'

S 00°26'18" W 1317.98'

HUNOS

BRANCH

PERE MARQUETTE

N 89°44'33" W

BASIS OF BEARING ON N. LINE, NW. 1/4 FROM R.F. MITCHELL'S
(428417) SURVEY OF AUGUST 6, 2002. FILE NO. 20020216.
PAGES 4885 THRU 4886.