

30290

Plat contained in
3 Sheets
Sheet No. 1

SUPERVISOR'S PLAT OF CHAIN-O-LAKES

Part of E 1/2 of Sec. 21 T.17N.R.14W
LAKE TWP
LAKE CO, MICH.

SCALE: 1 in = 100 ft

NOTE: All dimensions are in feet and decimals thereof.

DEDICATION

KNOW ALL MEN BY THESE PRESENTS: That I, George B. Blair, Supervisor of the Township of Lake, Lake County, State of Michigan, by virtue of authority in me vested by Sec. 21, Act 172, of the Public Acts of 1929, having been duly authorized by the Township Board of the Twp. of Lake, have caused the land described in the annexed plat to be surveyed, laid out and platted to be known as, Supervisors Plat of Chain-O-Lakes, part of the E 1/2 of Sec. 21 T.17N.R.14W. Lake Twp, Lake Co, Mich, and that the streets, walks and parks as shown on said plat are now being used for such purposes.

WITNESSES

W. H. ...
Supervisor of Lake Township.

DESCRIPTION of LAND PLATTED

The land embraced in the annexed plat of Supervisors Plat of Chain-O-Lakes, part of E 1/2 of Sec. 21, T.17N.R.14W. Lake Twp. Lake Co, Mich, is described as follows: Beginning at a point which is N 0° 30' E 92.70' from Sec. Corn. common to Sec's 21, 22, 23, 24 T.17N.R.14W, thence S 51° 46' W 40.50' - 37.12' to 000.00' - N 35° 45' W 489.00' - N 40° 33' W 582.94' to N 63° 14' line, thence N 10° 15' W 37.00' to center 1/4 post, thence N 89° 41' 30" E 70.00' - 54.42' to 233 - 229° 30' E 244.0 - 357° 14' E 262.0 - 34° 00' E 140.0 - N 88° 54' E 262.22' - N 121° 45' E 212.00' - N 41° 21' E 276.00' - 54° 41' 15" E 280.70' - 30° 15' E 16.0 to E. sec line of Sec. 21, thence S 0° 30' W 1241.18 on Sec. line to Point of Beg.

SURVEYOR'S CERTIFICATE

I hereby certify that the plat herein delineated is a correct one and that permanent metal monuments consisting of bars not less than one-half inch in diameter and 48 inches in length, encased in a concrete cylinder at least 4 inches in diameter and 48 inches in depth, have been placed at points marked thus (O) as thereon shown at all angles in the boundaries of the land platted, of all the intersections of streets, and at the intersections of streets with the boundaries of the plat as shown on said plat.

George B. Blair
Surveyor

Examined and Approved

July 6, 1942
Richard ...
Notary Public

I HEREBY CERTIFY THAT THIS COPY IS A TRUE COPY OF THE PLAT OR PLAT PLANNED BY THE JUSTICE OF DEEDS FOR RECORD.

COMPARED July 6, 1942
Richard ...
Notary Public

FILED IN AUDITOR GENERAL'S DEPT.

July 24, 1942
Richard ...
Notary Public

ACKNOWLEDGEMENT

STATE OF MICH }
COUNTY OF LAKE }

On this 2 day of June, 1947, before me, a Notary Public, in and for said County, personally came the above named George B. Blair, Supervisor of the Township of Lake, known to me to be the person who executed the above dedication and acknowledged the same to be his free act and deed as such Supervisor.

My Commission expires January 2, 1948
George B. Blair Notary Public, Lake Co, Mich.

APPROVAL by BOARD of COUNTY ROAD COMMISSIONERS

This plat has been examined and was approved on the 2 day of June, 1947 by the Lake County Board of Road Commissioners.

Clifford ... Chairman
George De ... Member

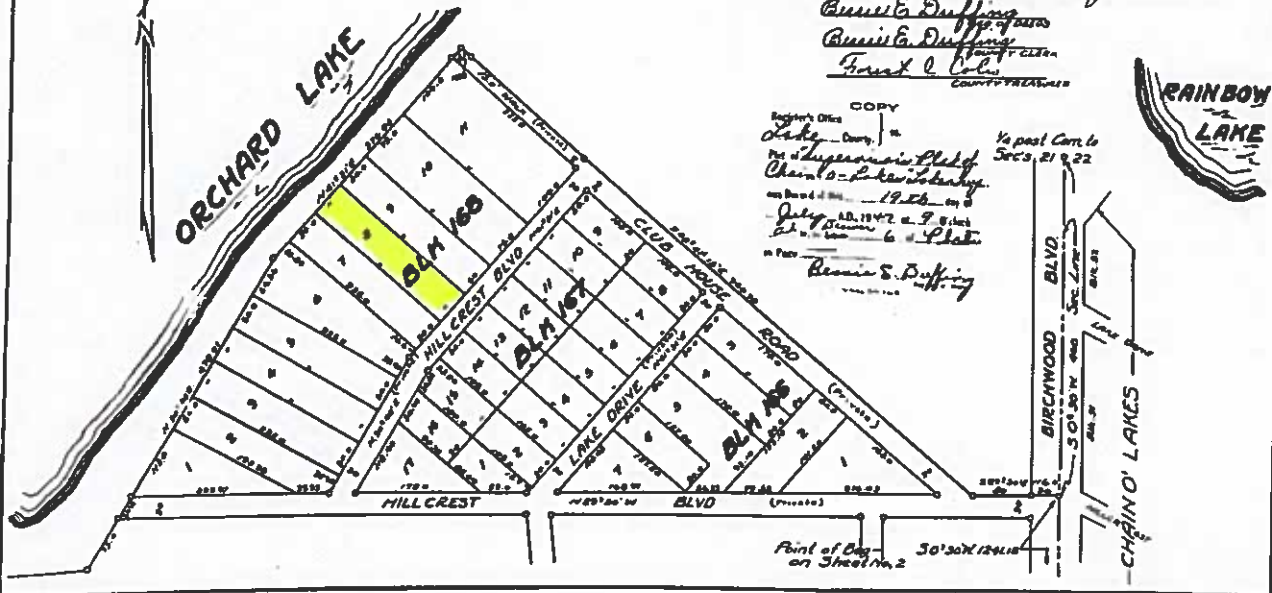
MUNICIPAL APPROVAL

This plat was approved by the Township Board of the Township of Lake at a meeting held June 1, 1947.

COUNTY BOARD APPROVAL

This plat was approved on the 5 day of June, 1947

Bessie E. Duffing
Bessie E. Duffing
Frank L. Cole
County Treasurer



COPY
Register's Office
County of Lake
This is a true and correct copy of the Supervisors Plat of Chain-O-Lakes, as shown on the original plat filed for record on July 6, 1942 at 7 o'clock P.M. in Book 6 of Plats.
Bessie E. Duffing
County Treasurer