

20953

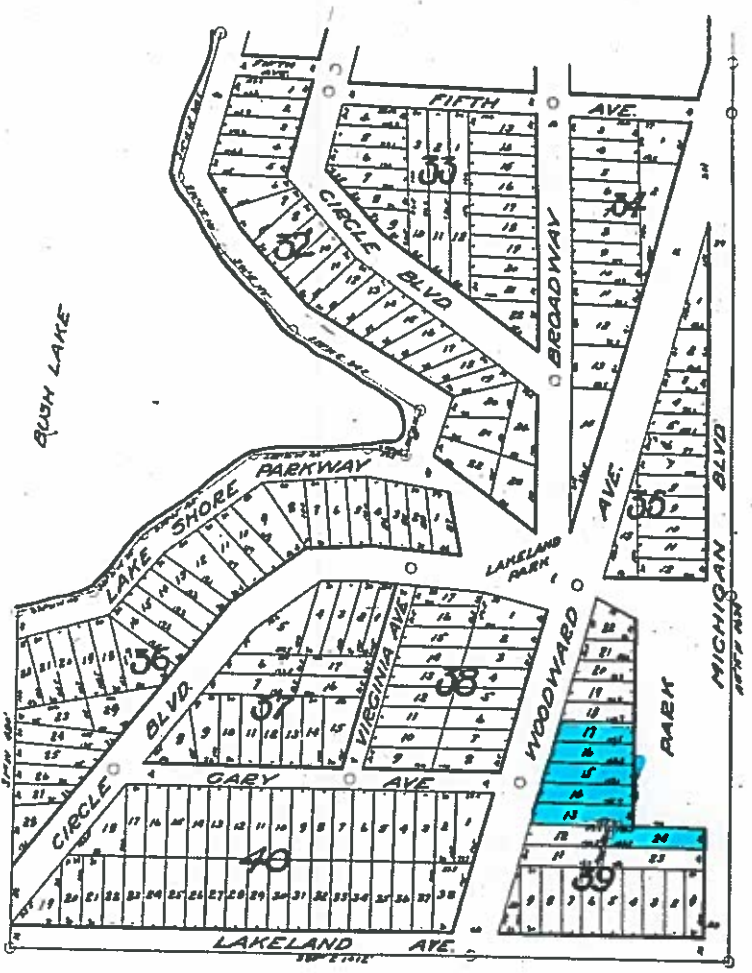
LAKELAND ACRES NO. 1

West part of Govt. Lots No. 6 and 7, Sec. 36 T18 N, R13 W.

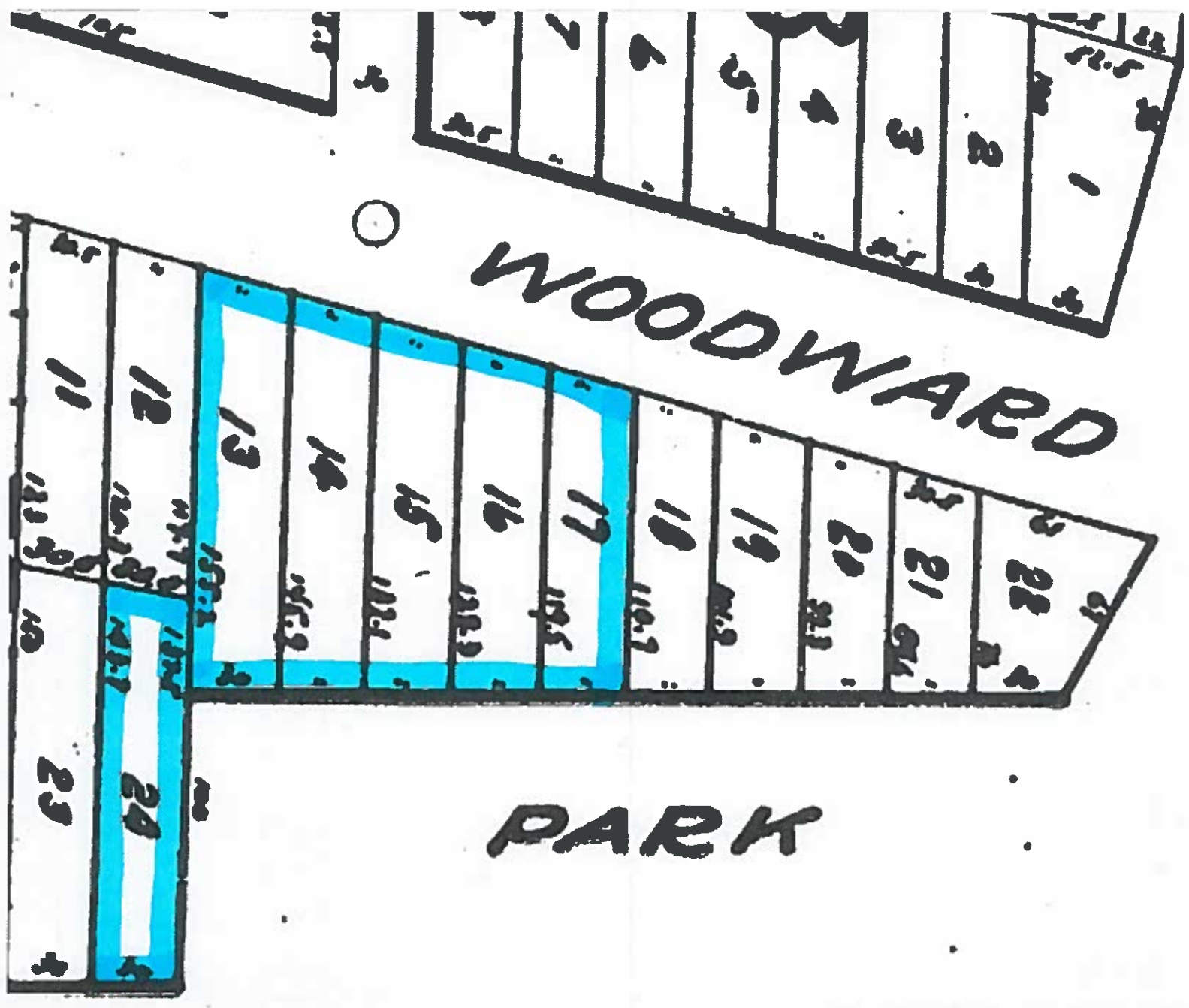
LAKE COUNTY, MICHIGAN.

Surveyed & Platted by
Geo. H. Johnson, Reg. Sur.
Bakwin, Mich.

Plat in 2 Sheets
Sheet 2



13225
 150
 19875
 4200
 24075
 55 Acre



MICHIGAN