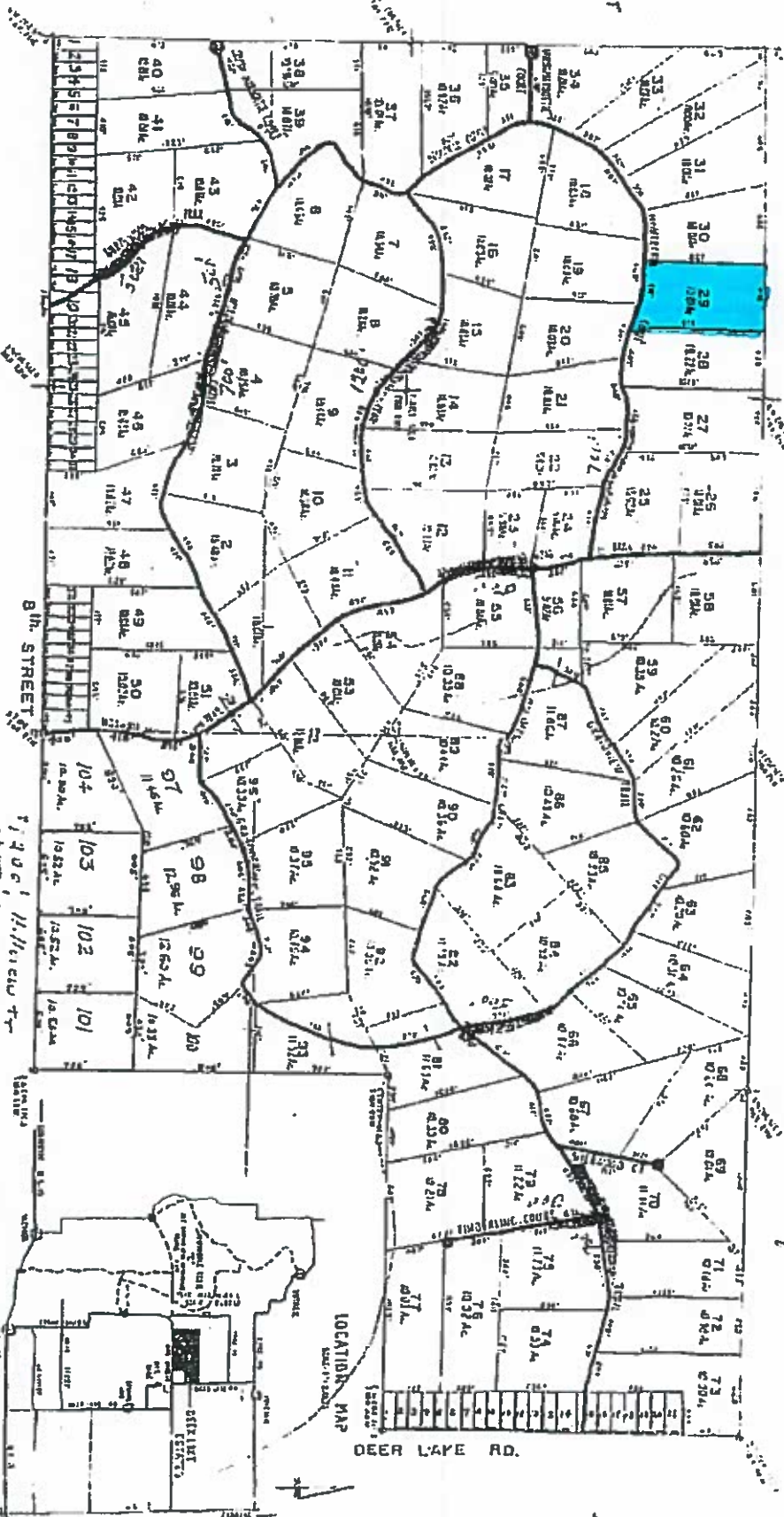


DEER LAKE ESTATES

1052 Air Year

Done To Do



WILDWOOD DEVELOPMENT CO.

\$150 per year
 snow plowing
 road maintenance
 garbage

- 1400' N. Huron Tr
- 1200' S. Duffield Cir
- 700' N. Duffield Cir
- 300' Northwest Tr
- 300' Tompkins Tr
- 300' Gokupoff Tr
- 300' Gokupoff Tr
- 3100' Gokupoff Tr

ATT: BRYAN RUDALL
 FIRM, JIM KANTROW

LOCATION MAP

DEER LAKE RD.