

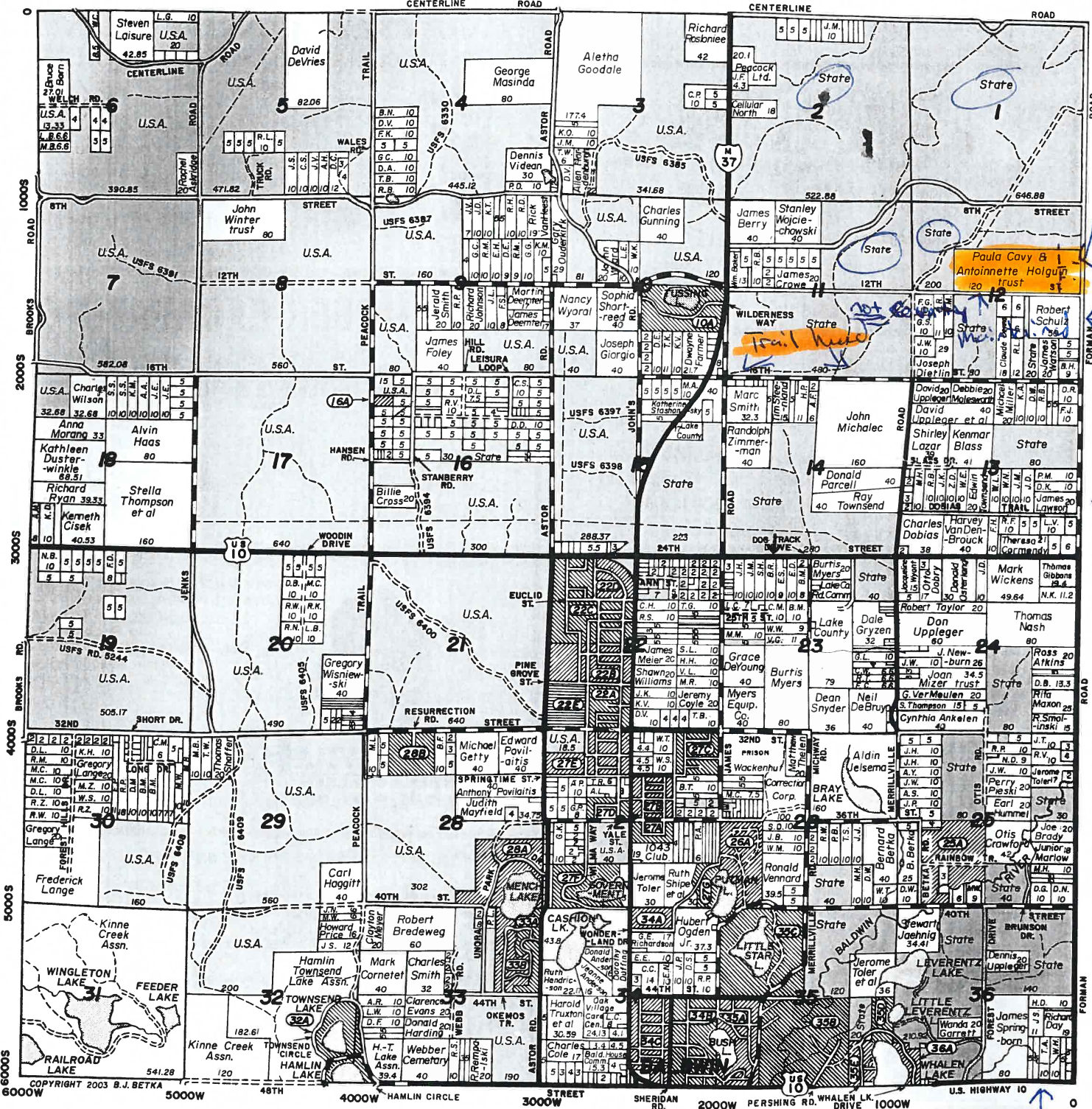
RECORDED PLATS:

- 10A WILDERNESS LAKE
- 16A FOREST ACRES
- 22A LAKEWOODS ACRES NO. 2
- 22B LAKEWOODS ACRES NO. 3
- 22C LAKEWOODS ACRES NO. 4
- 22D LAKEWOODS ACRES NO. 8
- 22E LAKEWOODS ACRES NO. 9
- 25A LEISURA
- 26A WEST'S LAND ACRES
- 27A LAKEWOODS ACRES
- 27B LAKEWOODS ACRES
- 27C LAKEWOODS ACRES
- 27D LAKEWOODS ACRES
- 27E LAKEWOODS ACRES NO. 2
- 27F GOVERNMENT LAKE
- 27G PUTMAN PARK

- 28A UNORA PARK
- 28B HAVEN'S REST
- 32A HAMLIN-TOWNSEND LAKES
- 33A ARROWHEAD VILLAGE
- 33B ARROWHEAD VILLAGE NO. 2
- 34A LAKEWOODS ACRES NO. 1
- 34B LAKELAND ACRES
- 34C LAKELAND ACRES NO. 3
- 35A LAKELAND ACRES NO. 1
- 35B LAKELAND ACRES NO. 2
- 35C LAZY ACRES
- 35D WHALEN LAKE RESORT NO. 1
- 35E WHITE PINE SHORES
- 36A WHALEN LAKE RESORT

STATE AND FEDERAL LANDS  
ARE SHOWN IN GREEN.

LAKE COUNTY			
ELK	EDEN	NORTH NEWKIRK	DOVER
SAUBLE	PEACOCK Page 41	SOUTH NEWKIRK	ELLSWORTH
SWEET-WATER Page 33	WEBBER Page 29	CHERRY VALLEY	PINORA
LAKE	PLEASANT PLAINS Page 21	YATES	CHASE



COPYRIGHT 2003 B.J. BETKA  
6000W 5000W 4000W HAMLIN CIRCLE 3000W STREET SHERIDAN RD. 2000W PERSHING RD. WHALEN LK. DRIVE 1000W U.S. HIGHWAY 10