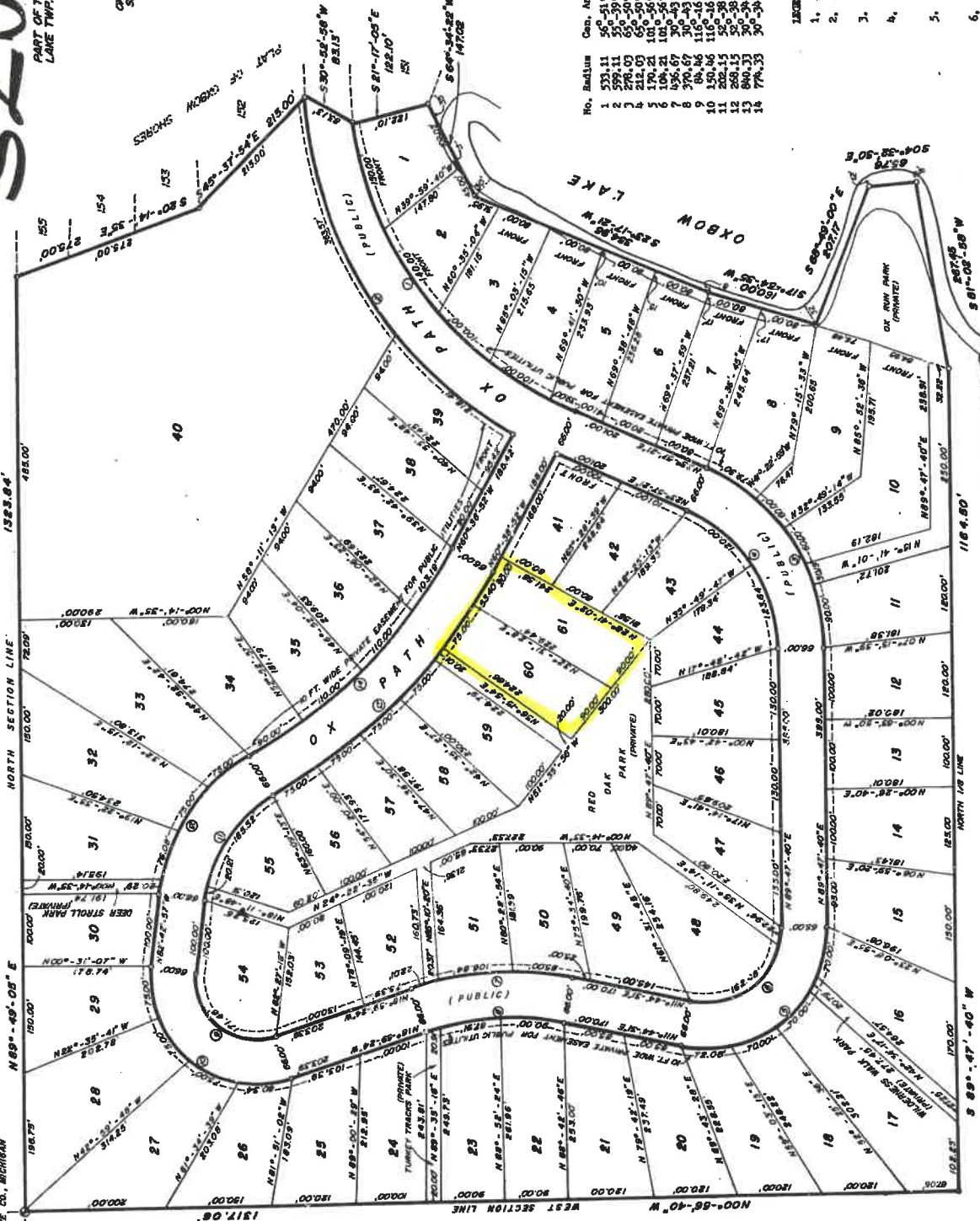


# OXBOW SLOPES

PART OF THE NW 1/4, SEC. 24, T17N, R14W,  
LAKE TWP., LAKE CO., MICHIGAN

UNPLATTED

POINT OF BEGINNING  
TOTAL AREA, LAKE TWP.,  
LAKE CO., MICHIGAN



**CURVE DATA**

No.	Radius	Con. Angle	Area	Tras.	I.C.	I.C. Bearing
1	573.11	50°-51'-09"	288.57	507.55	N15°-23'-00"	
2	573.11	50°-51'-09"	288.57	507.55	N15°-23'-00"	
3	270.03	65°-50'-19"	319.49	180.00	342.20	N50°-06'-30"
4	270.03	65°-50'-19"	319.49	180.00	342.20	N50°-06'-30"
5	170.21	103°-56'-51"	302.87	240.00	290.06	N55°-53'-31"
6	170.21	103°-56'-51"	302.87	240.00	290.06	N55°-53'-31"
7	436.67	30°-43'-53"	228.22	121.57	151.71	N79°-13'-50"
8	436.67	30°-43'-53"	228.22	121.57	151.71	N79°-13'-50"
9	305.34	116°-16'-26"	171.41	135.89	153.47	N30°-28'-20"
10	305.34	116°-16'-26"	171.41	135.89	153.47	N30°-28'-20"
11	202.15	50°-38'-31"	286.37	100.00	279.26	N39°-48'-45"
12	202.15	50°-38'-31"	286.37	100.00	279.26	N39°-48'-45"
13	840.33	30°-38'-25"	448.41	299.68	443.11	N65°-21'-40"
14	840.33	30°-38'-25"	448.41	299.68	443.11	N65°-21'-40"

- REMARKS**
- All dimensions are in feet.
  - All curvilinear dimensions are shown along the arc.
  - Concrete monuments have been placed at all points marked "O".
  - All lot corners are one-half inch iron rods 10 lines in length and extending no less than 6" into the line of lot.
  - Readings were established from the recorded plat of subdivision #2, recorded in Liber 112, page 296.
  - All waterfront lots extend to the water's edge.

53805

AND-MICHIGAN ENG'G SURVEY CO. 10122 N. MICHIGAN AVE. BIG HARPER, MICHIGAN

UNPLATTED